

Sailor Bows! - Tutorial & Patterns ♥

by Sparkle Pipsi

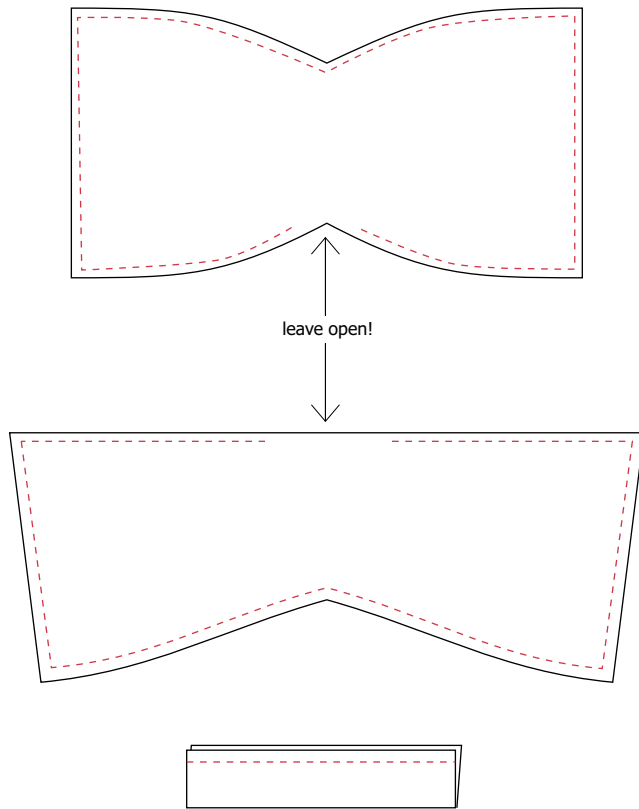
MATERIALS NEEDED:

- Heavy Fusible Interfacing (ie: Decorbond) - 0.5 yards
- Front Bow Fabric - 0.5 yards
- Butt Bow Fabric - 0.5 yards
- Printer and Paper for patterns



♥ Sailor Bows! - Tutorial

Front bows and butt bows are different sizes but they are assembled the same way ~ follow these instructions for both!
Printable patterns are included on pages 3-6.



MAIN BOW

For the main bow piece, start by ironing the interfacing to the wrong side of one of your two fabric pieces. Pin the two fabric pieces together, right sides together, and stitch as shown to the left. Leave the bottom open so you can turn the bow inside out.

♥ **TIP!!** Sew **RIGHT ALONG THE EDGE** of the interfacing when sewing together!! Having the edge of the interfacing as flush to the seam as possible is a trick that makes your bow edges look super crisp and clean when finished!

Once sewn together, clip all the corners of the bow close to the stitching, but not so close that it will come unstitched when turned inside out. Pinking shears are very useful for this step!!

Now turn in it inside out and use a pointy object (like a chopstick) to get the corners to point out. Iron all the seams flat. Tuck in all the raw edges at the bottom and sew that shut (It doesn't need to be perfect since the knot will cover it).

TAILS

Follow the same steps as above for the tails (interface, sew, turn inside out, iron!)

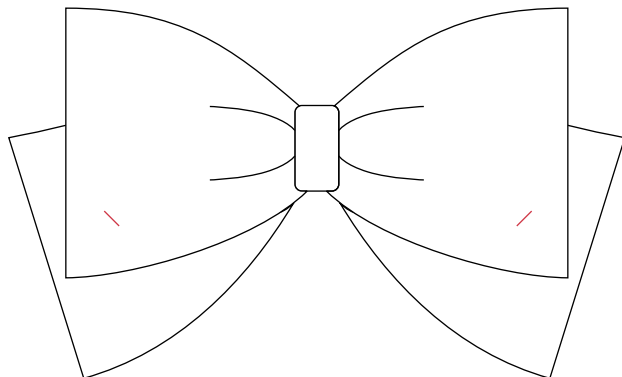
KNOT

For the knot, cut a 3"x5" fabric rectangle. Fold the fabric piece in half and stitch with 1/2" seam allowance. Once stitched, turn the fabric tube right-side out. Finished knot should be 1" wide.

Assemble!

Now that you have all your pieces, lay your main bow piece on top of the tails piece, then fold them together like an accordion. Once the bow is folded together, wrap the knot around the middle and stitch the knot in place in the back. Cut off any extra fabric from the knot piece.

♥ **TIP!!** To make sure your tails always stay perfectly in place, position the tails how you like and then blind stitch the Main Bow piece to the Tails piece. Just a couple quick hand stitches is enough to do the job! I marked the ideal position for the blind stitch in red on the diagram to the left.





The diagram shows a trapezoidal shape representing a bow. It features two concentric outlines: an inner red line and an outer black line. The shape is wider at the top and tapers towards the bottom. A small rectangular box at the bottom center indicates a fold line.

Front Bow

Cut 1 Interfacing (red line)

Cut 2 Fabric (black line)

Cut on Fold



The image shows a trapezoidal pattern piece for 'Front Bow Tails'. It features a red line forming an inner trapezoid and a black line forming the outer trapezoid. The piece is oriented with its longer top edge slightly angled. A vertical label on the right side indicates a fold line.

Front Bow Tails

Cut 1 Interfacing (red line)

Cut 2 Fabric (black line)

Cut on Fold

A diagram of a 'Butt Bow' pattern. It consists of a large, light gray trapezoidal shape with a curved bottom. Inside this shape is a red line forming a similar but slightly smaller trapezoid. The space between the red and black lines is the fabric, and the red line itself is the interfacing. The text 'Butt Bow' is centered in the middle. Below it are instructions for cutting. At the bottom center, there is a small rectangular box with the text 'Cut on Fold' inside it.

Butt Bow

Cut 1 Interfacing (red line)

Cut 2 Fabric (black line)

Cut on Fold

Butt Bow Tails

Cut 1 Interfacing (red line)

Cut 2 Fabric (black line)

Cut on Fold